



Open Transport

User's Guide

 Apple Computer, Inc.

© 1996 Apple Computer, Inc. All rights reserved.

Under the copyright laws, this manual may not be copied, in whole or in part, without the written consent of Apple. Your rights to the software are governed by the accompanying software license agreement.

The Apple logo is a trademark of Apple Computer, Inc., registered in the U.S. and other countries. Use of the “keyboard” Apple logo (Option-Shift-K) for commercial purposes without the prior written consent of Apple may constitute trademark infringement and unfair competition in violation of federal and state laws.

Every effort has been made to ensure that the information in this manual is accurate. Apple is not responsible for printing or clerical errors.

Apple Computer, Inc.
1 Infinite Loop
Cupertino, CA 95014-2084
(408) 996-1010

Apple, the Apple logo, AppleTalk, LocalTalk, Macintosh, and MacTCP are trademarks of Apple Computer, Inc., registered in the U.S. and other countries.

Balloon Help, Finder, and Mac are trademarks of Apple Computer, Inc.

Adobe, Adobe Illustrator, Adobe Photoshop, PostScript and SuperPaint are trademarks of Adobe Systems Incorporated, or its subsidiaries, which may be registered in certain jurisdictions.

PowerPC is a trademark of International Business Machines Corporation, used under license therefrom.

Simultaneously published in the United States and Canada.

Mention of third-party products is for informational purposes only and constitutes neither an endorsement nor a recommendation. Apple assumes no responsibility with regard to the performance or use of these products.



Contents



1	Welcome to Open Transport 1.1	1
	What is Open Transport?	1
	About this book	2
	What you need to know before you begin	2
	Other sources of information	3
2	Installing Open Transport Software on Your Computer	5
	What do you need to run Open Transport?	5
	Installing Open Transport the easy way	6
	Doing a custom installation	8
3	Setting Up and Using the AppleTalk Control Panel	11
	Getting help in the AppleTalk control panel	12
	Setting up your AppleTalk networking connection	12
	Working with AppleTalk configurations	14
	Choosing a configuration	14
	Making a new configuration	15
	Saving a configuration as a file	15
	Opening and using a saved configuration	16

Choosing Basic, Advanced, or Administration settings	16
Using Administration mode	19
Getting information about your settings	20
This Macintosh address	20
Hardware address	21
Router address	21
Turning AppleTalk on and off	22
4 Setting Up and Using the TCP/IP Control Panel	23
Getting help in the TCP/IP control panel	24
Setting up your TCP/IP network connection	24
Before you begin	24
Setting up	25
Configuring TCP/IP manually for an Ethernet connection	26
Configuring TCP/IP for use with an Ethernet server	29
Configuring TCP/IP manually for a MacIP connection	29
Configuring TCP/IP for use with a MacIP server	32
Working with TCP/IP configurations	33
Choosing a configuration	33
Making a new configuration	33
Saving a configuration as a file	34
Opening and using a saved configuration	35
Choosing Basic, Advanced, or Administration settings	35
Using Administration mode	36
Getting information about your settings	37
Turning TCP/IP on and off	38

About TCP/IP settings	38
IP address	38
Subnet mask	39
Router address	39
Name servers, domain names, and domain searching	40
5 Troubleshooting	43
AppleTalk troubleshooting suggestions	43
TCP/IP troubleshooting suggestions	44
Appendix TCP/IP Hosts File Format	47
Index	49

1

Welcome to Open Transport 1.1



This chapter introduces Open Transport 1.1. You can save time later if you take a few minutes now to learn about Open Transport and what you use it for.

What is Open Transport?

Open Transport is the modern, industry-standard networking and communications software for the Mac OS. Open Transport 1.1 is the first version designed to run on a wide range of Macintosh computers. With Open Transport software installed on your computer, you can

- use more than one networking system at once (for example, AppleTalk to communicate with network printers and TCP/IP to connect to the Internet)
- save and modify different networking configurations
- switch among networking configurations quickly and easily

Open Transport includes the AppleTalk and TCP/IP control panels. These replace the Network and MacTCP control panels used in previous versions of the Mac OS. You can use Open Transport on any Mac OS computer that uses a PowerPC processor, or a 68030 or 68040 processor. Open Transport is required on any Mac OS computer that uses the PCI bus.

To use Open Transport, you first install the software onto your Mac OS computer. The Open Transport Installer places the AppleTalk and TCP/IP control panels into your Control Panels folder. You use the AppleTalk control panel to set up your connection to an AppleTalk network (that is, a network using the AppleTalk protocol). You use the TCP/IP control panel to set up your connection to the Internet, and to a TCP/IP network. TCP/IP stands for Transmission Control Protocol/Internet Protocol, an industry-standard system for connections between computers of different types.

About this book

This book is for Open Transport users and for administrators of networks that include computers that use Open Transport. Here's what you'll find in the remaining chapters:

- Chapter 2 provides instructions for installing the Open Transport 1.1 software on your computer. If you received Open Transport 1.1 with a Mac OS computer, the software has been installed for you, and you can skip Chapter 2. (If you are using a previous version of Open Transport, you should upgrade to version 1.1.)
- Chapter 3 describes how to use the AppleTalk control panel to set up and control your connection to an AppleTalk network.
- Chapter 4 describes how to use the TCP/IP control panel to set up and control your connection to a network that uses TCP/IP, such as an Ethernet network or the Internet.
- Chapter 5 provides troubleshooting suggestions.

What you need to know before you begin

This book assumes that you have basic Macintosh skills. You should know how to

- use the mouse and keyboard
- choose commands from menus
- open folders and application programs
- save documents

If you need to learn more about these basic tasks, consult the learning materials that came with your computer.

You may need additional information about the network to which your computer is connected, or about the service through which your computer is connected to the Internet. To get this information, you may need to contact your network administrator or your Internet service provider. See Chapters 3 and 4 for details about the information you need and where to look for it.

Other sources of information

In addition to this book, you can take advantage of the onscreen instruction built into Open Transport—Balloon Help and (if you are using system software version 7.5.3 or later) Apple Guide instructions.

When Balloon Help for Open Transport is turned on, you can get information about any item on the screen simply by pointing to the item with the mouse.

You can get step-by-step instructions for using the Open Transport control panels with Macintosh Guide, available in the Guide (📖) menu when the Finder is the active program.

There may be late-breaking news about Open Transport that is not included in this book. Open the Read Me file that came with Open Transport to find additional information. This file also includes information on the new features of Open Transport version 1.1.

2

Installing Open Transport on Your Computer



Before you can set up Open Transport and begin using it, you need to install the software.

IMPORTANT If you received Open Transport 1.1 packaged with a Mac OS computer, the software has already been installed on your computer. Skip this chapter and continue with Chapter 3. If you are using a previous version of Open Transport, you should upgrade to version 1.1. If you are not sure what version of Open Transport is installed on your computer, open the AppleTalk control panel (in your Control Panels folder) and choose Get Info from the File menu. A window appears with information about the version of Open Transport you have installed.

What do you need to use Open Transport?

Your computer must have the following features to use Open Transport 1.1:

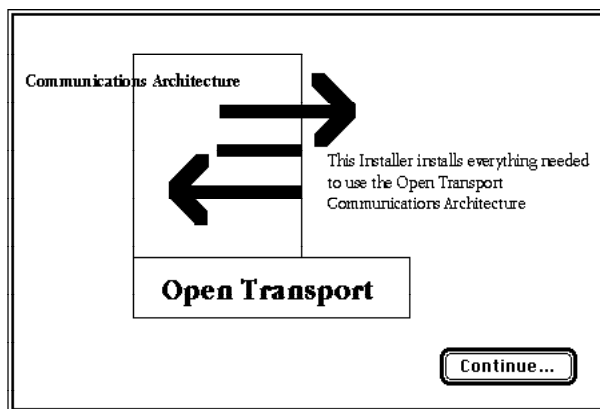
- a PowerPC central processing unit (CPU) or a 68030 or 68040 CPU
- at least 8 megabytes (MB) of random-access memory (RAM)
- system software version 7.1, 7.1.1, 7.1.2, or 7.5.3 (system software version 7.5.3 or later is recommended)

Installing Open Transport the easy way

To install Open Transport on your hard disk, you use the Installer program on the first installation disk included in the Open Transport package. This section describes the basic Open Transport installation (called “Easy Install”) that gives you the software you need in most cases. For instructions on installing specific portions of Open Transport software, see the next section, “Doing a Custom Installation.”

- 1 Turn on your computer and wait until the Mac OS desktop appears.
- 2 Insert the first Open Transport installation disk.
- 3 Double-click the Installer icon.

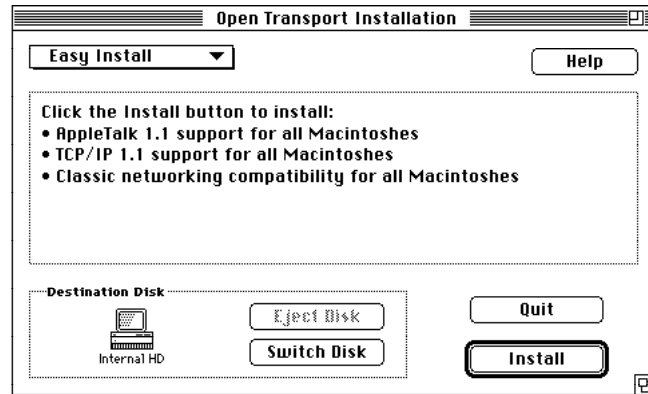
A screen appears welcoming you to the Open Transport Installer.



Note: If you are installing over an older version of Open Transport, you may see messages during the installation asking if you want to install newer versions of files that already exist on your hard disk. Make sure you always choose to install the new versions of each file.

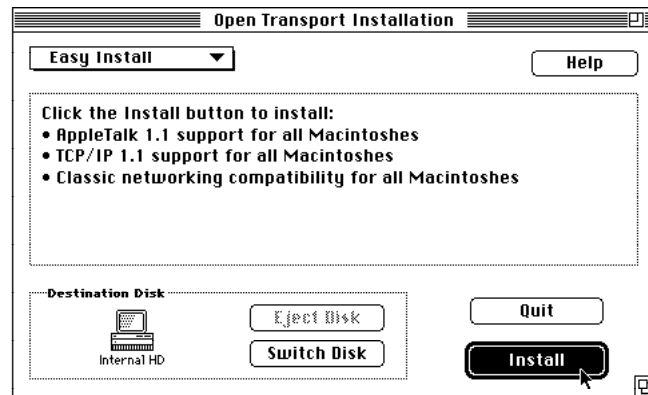
4 Click Continue.

After a few moments, this window appears:



Make sure you see in the Destination Disk box the name of the disk on which you want to install Open Transport. You can install Open Transport on any hard disk that has the correct version of system software installed. If you don't see the correct name, click Switch Disk until you see the name of the disk you want.

5 Click Install.



If any application programs are running, the Installer prompts you to quit those programs.

A status screen shows you the progress of the installation. When the installation is complete, a message tells you so.

- 6 Click **Restart** to exit from the Installer program and restart the computer.

You have finished installing Open Transport. To set up and use the AppleTalk control panel, turn to Chapter 3. To set up and use the TCP/IP control panel, turn to Chapter 4. If you don't know which control panel to use, consult your network administrator or Internet service provider.

Doing a custom installation

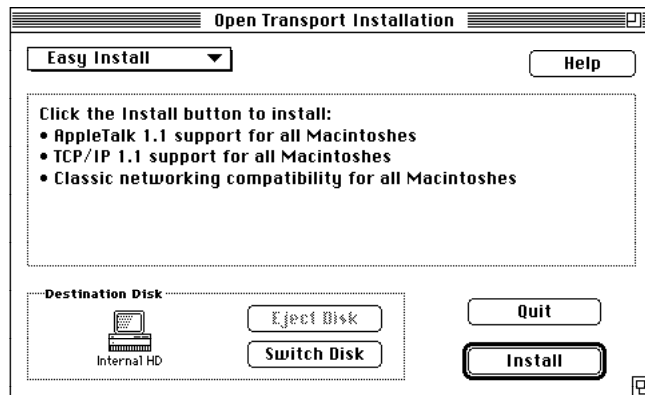
To install specific parts of Open Transport, follow these steps:

- 1 Turn on your computer and wait until the Mac OS desktop appears.
- 2 Insert the first Open Transport installation disk.
- 3 Double-click the Installer icon.

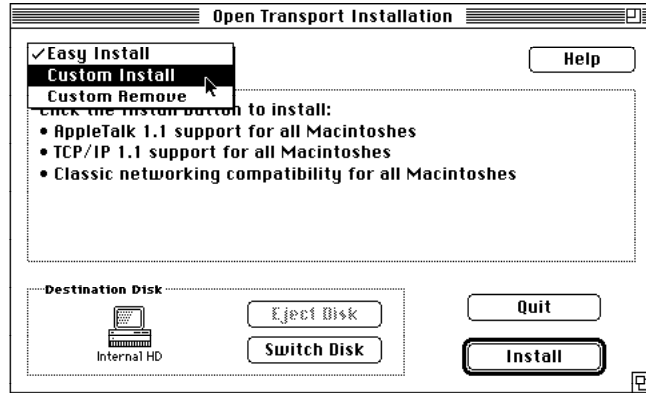
A screen appears welcoming you to the Open Transport Installer.

- 4 Click **Continue**.

After a few moments, this window appears:

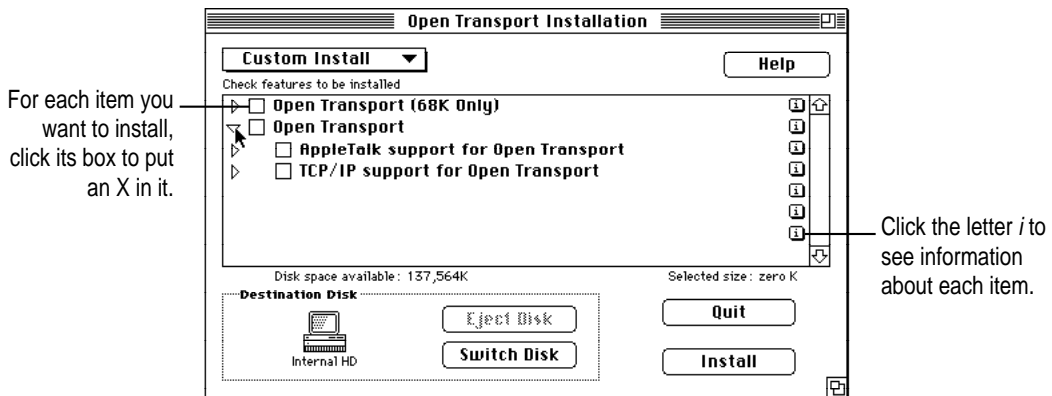


5 Choose Custom Install from the pop-up menu.



Make sure you see in the Destination Disk box the name of the disk on which you want to install Open Transport. You can install Open Transport on any hard disk that has the correct version of system software installed. If you don't see the correct name, click Switch Disk until you see the name of the disk you want.

6 In the window that appears, choose the items you want to install.



7 Click Install.

If any application programs are running, the Installer prompts you to quit those programs.

A status screen shows you the progress of the installation. When the installation is complete, a message tells you so.

8 Click Restart to exit from the Installer program and restart the computer.

You have finished installing Open Transport. To set up and use the AppleTalk control panel, turn to Chapter 3. To set up and use the TCP/IP control panel, turn to Chapter 4. If you're not sure which control panel to use, consult your network administrator or Internet service provider.

3

Setting Up and Using the AppleTalk Control Panel



You use the AppleTalk control panel when your computer is connected to a network that uses the AppleTalk protocol. A network using the AppleTalk protocol may use LocalTalk, Ethernet, or other types of cabling. If you don't know whether your network uses the AppleTalk protocol, contact your network administrator.

Read the instructions in this chapter to accomplish the following tasks with the AppleTalk control panel:

- specify the port through which your computer is connected to the network
- choose the network zone in which your computer appears (if your network allows this)
- use configurations to change all your settings at once
- see and use Basic, Advanced, and Administrative settings
- get information about your AppleTalk setup
- turn AppleTalk on and off

Getting help in the AppleTalk control panel

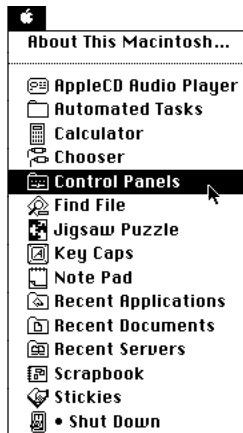
When the AppleTalk control panel is open, you can get two types of onscreen help: Balloon Help and Macintosh Guide. Turn on Balloon Help to find out more about the items in the control panel windows. Use Macintosh Guide for step-by-step instructions about using the control panel. (Macintosh Guide is available only if you have system software version 7.5.3 or later.) Balloon Help and Macintosh Guide are available in the Guide (Ⓜ) menu. (Macintosh Guide is only available in the menu when the Finder is the active program.) In addition, you can open Macintosh Guide by clicking the Guide (Ⓜ) button in the lower-left corner of each control panel window.

Setting up your AppleTalk network connection

To set up your AppleTalk network connection, you must specify the port you use to connect your computer to the network. If your network has more than one zone, you can choose the zone in which your computer is located. The zone you choose is the zone that is automatically selected in the Chooser (for example, when you select a network printer) and it is the zone in which other network users can find your computer if you turn on file sharing.

To set up your network connection, follow these steps:

- 1 Choose Control Panels from the Apple (Ⓜ) menu.

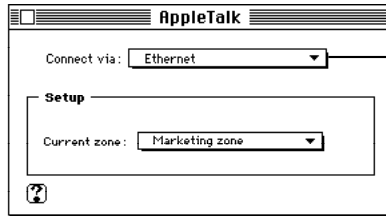


The Control Panels window opens.

- 2 Double-click the AppleTalk icon to open it.

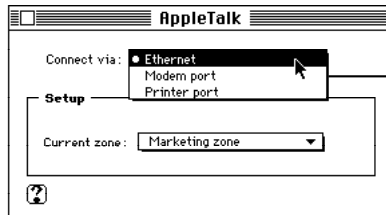


The AppleTalk control panel opens.



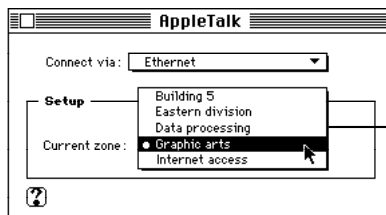
If you don't see a pop-up menu here, this setting has been locked or your computer has only one port. You use the Administration user mode to lock and unlock settings.

- 3 Use the "Connect via" pop-up menu (if available) to choose the port by which your computer is connected to the network.



With Open Transport, you can connect to an AppleTalk network through the printer port, the modem port, or any additional ports installed in your computer. If you have more ports installed, they appear automatically in this pop-up menu.

- 4 Use the Current Zone pop-up menu (if available) to choose the zone you want.



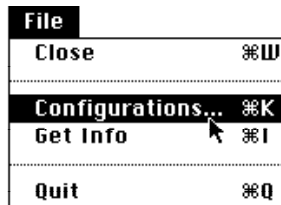
If you don't see a pop-up menu here, this setting has been locked or your network is not set up to allow you to choose a different zone. Zones are set up by the network administrator.

Working with AppleTalk configurations

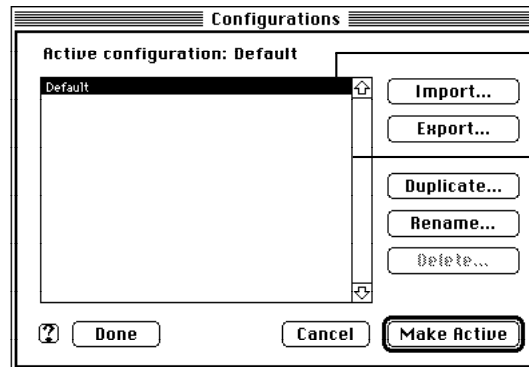
An “AppleTalk configuration” is a collection of settings you make in the AppleTalk control panel. The group of settings currently displayed in the control panel is the active configuration.

You can save different groups of settings (configurations) and switch among them as desired—for example, if you use your computer in more than one location.

- **Make sure the AppleTalk control panel is open, and choose Configurations from the File menu.**



The Configurations window opens.



The Default configuration appears the first time you open the Configurations window.

You may see more configurations in this list if your network administrator has provided them.

Choosing a configuration

If you see the configuration you want in the list, click it, then click Make Active. The Configuration window closes, and the configuration you chose takes effect.

Making a new configuration

You make a new configuration by starting with an existing one and modifying it. To create a new configuration, follow these steps:

1 In the configuration list, click to select the configuration you want to modify.

2 Click Duplicate.

3 In the window that appears, type a name for the new configuration, then click OK.

The new configuration name appears in the list.

4 Click the new configuration name, then click Make Active.

The Configurations window closes.

5 Make any changes you want to the control panel settings.

6 Click the close box to close the control panel (or choose Quit from the File menu).

A box appears asking if you want to save the changes you made to the configuration.

7 Click Save.

The new configuration is saved with the changes you made. The next time you open the AppleTalk control panel, your new configuration will still be in effect.

Saving a configuration as a file

You can save (export) a configuration as a file separate from the AppleTalk control panel. You can use (import) the file to automatically duplicate the control panel settings on another computer using Open Transport. To save a configuration as a file, follow these steps:

1 In the Configurations window, click to select the configuration you want to save as a file.

2 Click Export.

3 In the box that appears, type a name for the configuration file, and choose the folder or disk where you want to save it.

4 Click Save.

Your configuration is saved as a file in the location you chose with the name you specified.

Opening and using a saved configuration

You can open and use (import) a configuration file that has been exported from the AppleTalk control panel. To open and use a configuration file, follow these steps:

1 In the Configurations window, click Import.

2 In the box that appears, click to select the configuration file you want to use.

3 Click Import.

The configuration is imported into the Configurations window.

4 Click Make Active.

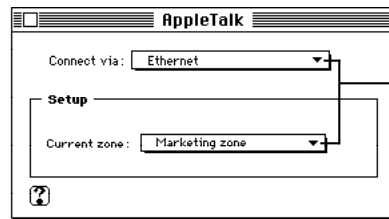
The settings specified in the imported configuration take effect immediately.

Choosing Basic, Advanced, or Administration settings

When you first open the AppleTalk control panel, you see only the basic settings. Basic settings provide the controls you need in most cases. To see or change other settings, you must change the user mode from Basic to Advanced or Administration. Settings you make in Advanced and Administration mode stay in effect if you change to Basic mode, even though you may not be able to see the settings.

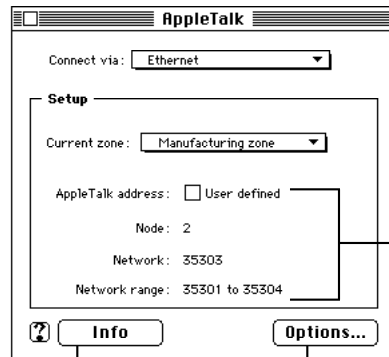
IMPORTANT The Advanced and Administrative modes include settings that can cause network problems if used improperly. If you are not sure how to use Advanced or Administration settings, leave the settings unchanged until you check with your network administrator.

In Basic mode, the AppleTalk control panel looks like this:



In Basic mode, you can see and usually change the port and your computer's current zone.

In Advanced mode, the AppleTalk control panel looks like this:



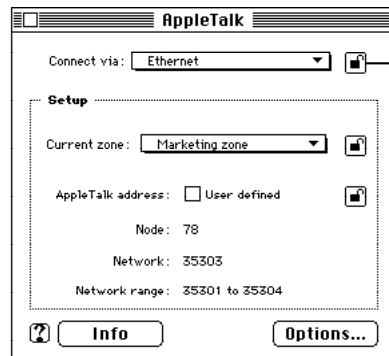
In Advanced mode, you can see and usually change your computer's network address.

WARNING Do not do this unless you are sure your address information is correct.

Click Info for details about your settings.

Click Options to turn AppleTalk off or on again.

In Administration mode, the AppleTalk control panel looks like this:



In Administration mode, you can lock settings so they can't be changed. To lock a setting, click the lock button. To unlock it, click again.

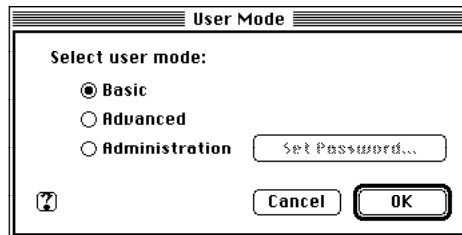
For more information about using Administration mode, see the next section, "Using Administration Mode."

To change the user mode, follow these steps:

- 1 With the AppleTalk control panel open, choose User Mode from the Edit menu.



- 2 In the dialog box that appears, choose the mode you want, then click OK.



If you choose Administration mode, and it has been protected by a password, a box appears to enter the password.

The main control panel window changes to reflect the mode you chose.

Using Administration mode

When you're in Administration mode, you can lock and unlock settings, and set a password limiting access to Administration mode. To set a password, follow these steps:

- 1 With the AppleTalk control panel open, choose **User Mode** from the **Edit** menu.
- 2 In the window that appears, click the **Administration** button.
- 3 Click **Set Password**.
- 4 In the box that appears, type the password you want to use.

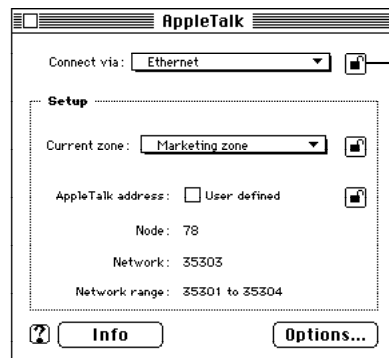
When you type the password, you see dots (•) instead of the letters you type.

- 5 Type the password again to make sure you typed it correctly, then click **OK**.

If you change the user mode to **Basic** or **Advanced**, you must use the password to change the mode back to **Administration**.

Locking settings

To lock settings, set the AppleTalk control panel to Administration mode, then click the lock icon next to each setting you want to lock. Click again to unlock a setting. If you change the user mode to **Basic** or **Advanced**, the settings you lock cannot be changed.



To lock a setting, click the lock button.
To unlock it, click again.

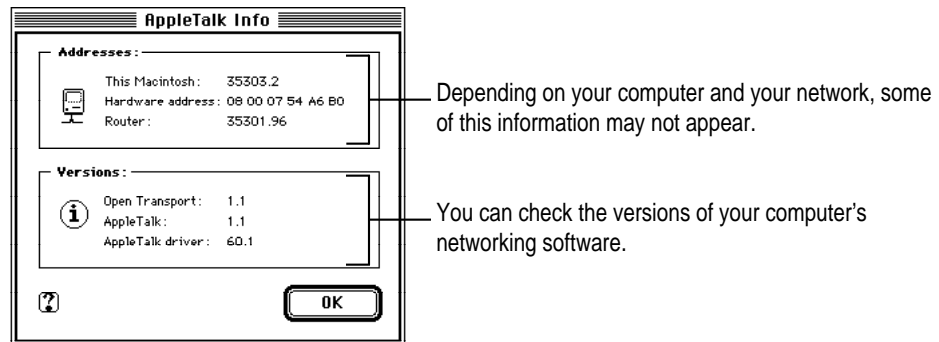
Getting information about your settings

For detailed information about the AppleTalk addresses and software versions currently in effect, do this:

- **Choose Get Info from the File menu.**

If the control panel is in Advanced or Administration mode, you can also click the Info button.

The AppleTalk Info window opens. You can see information in this window, but you cannot change it.



This Macintosh address

Your computer's AppleTalk address is a number that uniquely identifies it on the network. The number to the left of the dot is your computer's network number. The number to the right of the dot is the node number. Unless you choose to set a specific AppleTalk address (which is not recommended), your computer chooses an AppleTalk address every time it starts up. This means that the number you see may be different if you shut down and restart your computer.

Hardware address

The hardware address is a number identifying the port you use to connect your computer to the network. Ethernet ports and many networking expansion cards have hardware addresses. Your computer's serial ports do not have hardware addresses.

Router address

A router is a device (or a program running on a network device) that directs information along the most efficient or appropriate network paths. It is connected to a network at a point between two or more groups of computers and other network devices, and it contains a list identifying the addresses of the computers in each group. When a packet of information reaches the router, the router checks the address of the computer the packet is being sent to and directs it to the part of the network containing that address.

The AppleTalk Info window shows the network address of the router currently being used by your computer. This address may not always be the same because your computer's AppleTalk software constantly looks for the best router to use. When conditions on the network change, the software may choose a different router.

If no address is available, it means that your computer was unable to find a router, or your network does not have any routers.

Turning AppleTalk on and off

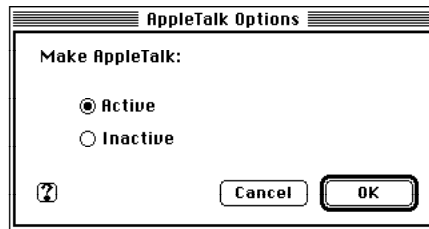
When you are not using an AppleTalk network, you can turn AppleTalk off to save RAM in your computer. When you need to use AppleTalk again, you can turn it on. To turn AppleTalk on and off, follow these steps:

- 1 Make sure the user mode is set to Advanced or Administration.**

For instructions on changing the user mode, see “Choosing Basic, Advanced, or Administration Settings,” earlier in this chapter.

- 2 Click Options.**

- 3 In the window that appears, click to turn AppleTalk on (active) or off (inactive), then click OK.**



AppleTalk becomes active or inactive as soon as you click OK.

4

Setting Up and Using the TCP/IP Control Panel



You use the TCP/IP control panel when your computer is connected to a network that uses TCP/IP standards. TCP/IP (Transmission Control Protocol/Internet Protocol) is a standard set of rules (or protocols) for making connections among different types of computers. TCP/IP protocols can be used with many different types of network hardware, including LocalTalk, Ethernet, and dialup Internet connections. If you don't know whether your network uses TCP/IP, contact your network administrator.

Read the instructions in this chapter to accomplish the following tasks with the TCP/IP control panel:

- specify your network connection
- enter your IP address and subnet mask (or identify the server from which they are available)
- use configuration files
- see and use Basic, Advanced, or Administration settings
- get information about your TCP/IP setup
- turn TCP/IP on and off
- understand the various settings in the TCP/IP control panel

Getting help in the TCP/IP control panel

When the TCP/IP control panel is open, you can get two types of onscreen help: Balloon Help and Macintosh Guide. Turn on Balloon Help to find out more about the items in the control panel window. Use Macintosh Guide for step-by-step instructions about using the control panel. (Macintosh Guide is available only if you have system software version 7.5.3 or later.) Balloon Help and Macintosh Guide are available in the Guide (Ⓜ) menu. (Macintosh Guide is only available in the menu when the Finder is the active program.) In addition, you can open Macintosh Guide by clicking the Guide (Ⓜ) button in the lower-left corner of the control panel window.

Setting up your TCP/IP network connection

To set up your TCP/IP network connection, you must specify the port you use to connect your computer to the network. TCP/IP networks also require information about your computer's network address. You must enter that information in the control panel, or specify a server on which the information can be found.

You can make it easier to find network services by entering addresses of name servers and domain names you want to use. Name servers work like automatic phone books for locating network services and domain names are like postal addresses for locating network services. This information may also be provided by a server, if your network includes a server with this capability.

Before you begin

To use a TCP/IP network, your computer must have an IP (Internet Protocol) address, and it often must have a subnet mask number. This information can be entered manually or obtained automatically from one of several types of servers. Before you set up your TCP/IP network connection, obtain your IP address and subnet mask number from your Internet service provider or network administrator. If these can be obtained automatically from a server, find out whether the server is a “BootP,” “RARP,” “DHCP,” or “MacIP” server.

“RARP” stands for Reverse Address Resolution Protocol. A RARP server can provide the IP address for your computer (you must provide the rest manually).

“BootP” stands for Boot Protocol. A BootP server can automatically provide all the TCP/IP setup information you need.

“DHCP” stands for Dynamic Host Configuration Protocol. A DHCP server can automatically provide all the TCP/IP setup information you need.

“MacIP” stands for Macintosh Internet Protocol. MacIP is both a type of server and a protocol for sending Internet-type packets of information over an AppleTalk network. A MacIP server can provide the IP address for your computer.

Setting up

To set up your TCP/IP network connection, follow these steps:

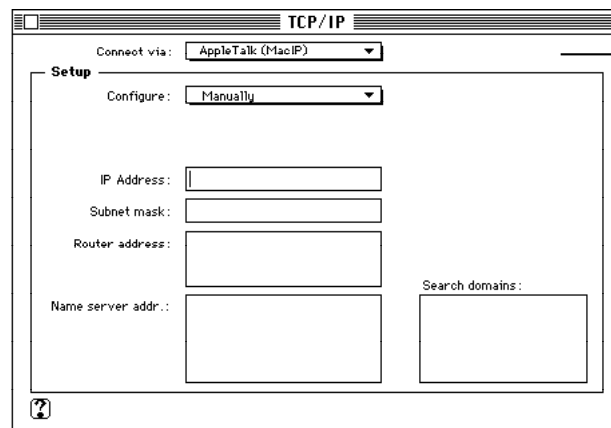
- 1 **Choose Control Panels from the Apple () menu.**

The Control Panels window opens.

- 2 **Double-click the TCP/IP icon to open it.**



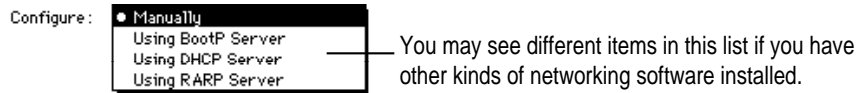
The TCP/IP control panel opens.



If you don't see all of the settings shown here, some settings may have been locked. You use the Administration user mode to lock and unlock settings.

- 3 Use the “Connect via” pop-up menu to choose the port by which your computer is connected to the network.
- 4 Use the Configure pop-up menu to choose a configuration method.

If you are connected using Ethernet, the pop-up menu looks like this:



If you are connected using AppleTalk (MacIP), the pop-up menu looks like this:



Configuring TCP/IP manually for an Ethernet connection

You must configure TCP/IP manually if your service provider or network administrator gave you an IP address (and possibly other information) to use.

IMPORTANT Make sure your IP address is correct. Entering an incorrect address can cause problems on your computer and on the network.

To configure TCP/IP manually for use with an Ethernet port, follow these steps:

- 1 Type the IP address number for your computer in the IP Address box.

An IP address is a set of four numbers from 0 to 255, separated by dots (for example, 111.123.222.213). It identifies your computer on the network.

- 2 If you have a subnet mask number, type it in the “Subnet mask” box.

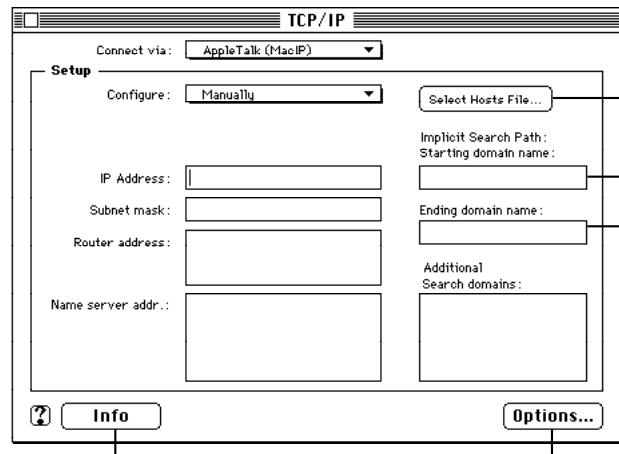
Some networks are divided into sections called subnetworks, or subnets. A subnet mask is a set of numbers used in conjunction with an IP address to identify the subnetwork your computer is connected to. Like an IP address, a subnet mask is a set of numbers from 0 to 255, separated by dots (for example, 128.0.0.0). If you do not enter a subnet mask, Open Transport provides a default value automatically.

3 If you have a router address, type it in the “Router address” box.

A router address is the IP address for a router—a device that directs information along the most efficient or appropriate network paths. It is connected to a network at a point between two or more groups of computers and other network devices, and it contains a list identifying the addresses of the computers in each group. When a packet of information reaches the router, the router checks the address on the packet and sends it to the part of the network containing that address. If you don’t enter a router address, you may not be able to access your whole network.

You can enter more than one router address (press the Return key after each address you enter).

4 If you have additional information, type it in the appropriate boxes.



These buttons and boxes appear only if you choose the Advanced or Administration user modes.

Name server address

A name server address is the IP address of a name server (or domain name server)—a computer that makes available the network address numbers for computers and other network devices that you know by name. For example, if you want to find a host computer called “server.xyz.com,” a name server could automatically match that name with an IP address (the computer-to-computer address).

You can type more than one name server address in the name server address box. Press Return after each address. You can list as many name servers as you want as long as your list doesn't total more than 255 letters and symbols.

Hosts file

The Select Hosts File button appears only when the TCP/IP control panel is set to Advanced or Administration user mode. For instructions on setting the user mode, see “Choosing Basic, Advanced, or Administration Settings,” later in this chapter.

A Hosts file is a list of DNS (Domain Naming System) resources. It is stored on your computer's hard disk. You use a Hosts file to easily access network information you use frequently. This is the same function provided by name servers. It is recommended that you use name servers rather than a Hosts file.

Implicit search domains

The implicit search domain boxes appear only when the TCP/IP control panel is set to Advanced or Administration user mode. For instructions on setting the user mode, see “Choosing Basic, Advanced, or Administration Settings,” later in this chapter.

TCP/IP can automatically search for computers you partially identify (in a networking application program) by “host name”—a name representing that computer on the network. To make the search possible, you specify a name representing a local network domain (the “starting name”) and a name representing a larger domain containing the local domain (the “ending name”). TCP/IP uses the domain names you enter to search for a valid host name when you identify only part of the name.

For more information about domain names and how the search process works, see “Name Servers, Domain Names, and Domain Searching,” later in this chapter.

Additional search domains

TCP/IP can search for computers in different domains than yours. You specify the domains you want to search in the Additional Search Domains box. Press the Return key after each domain name you type. You can list as many search domains as you want as long as your list doesn't total more than 255 letters and symbols.

For more information about domain names and how the search process works, see “Name Servers, Domain Names, and Domain Searching,” later in this chapter.

Configuring TCP/IP for use with an Ethernet server

To configure TCP/IP using a BootP server or a DHCP server, all you need to do is choose the appropriate type of server from the Configure pop-up menu. The server usually provides all the configuration information needed by TCP/IP.

A RARP server provides only the IP address for your computer. If your network uses subnets, and if you have additional TCP/IP configuration information to enter, follow the instructions in the section “Configuring TCP/IP Manually for an Ethernet Connection,” earlier in this chapter.

Configuring TCP/IP manually for a MacIP connection

You must configure TCP/IP manually if you are connected to the network using AppleTalk and your service provider or network administrator gave you an IP address (and possibly other information) to use.

To configure TCP/IP manually for use with MacIP, follow these steps:

- 1 Type the IP address number for your computer in the IP Address box.**

An IP address is a set of numbers from 0 to 255, separated by dots (for example, 111.123.222.213). It identifies your computer on the network.

2 If you have a subnet mask number, type it in the “Subnet mask” box.

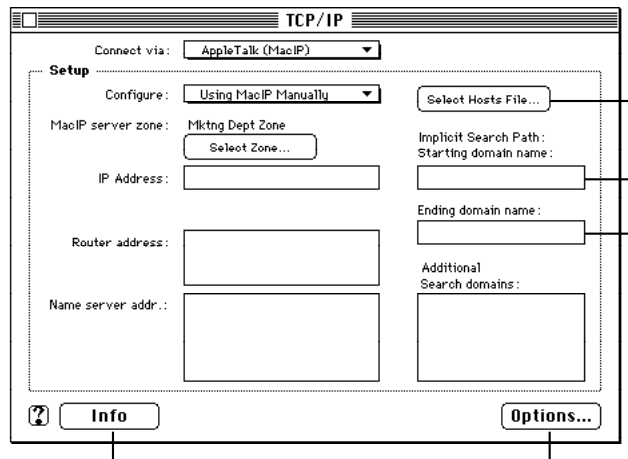
Some networks are divided into sections called subnetworks, or subnets. A subnet mask is a set of numbers used in conjunction with an IP address to identify the subnetwork your computer is connected to. Like an IP address, a subnet mask is a set of numbers from 0 to 255, separated by dots (for example, 128.0.0.0). If you do not enter a subnet mask, Open Transport provides a default value automatically.

3 If you have a router address, type it in the “Router address” box.

A router address is the IP address for a router—a device that directs information along the most efficient or appropriate network paths. It is connected to a network at a point between two or more groups of computers and other network devices, and it contains a list identifying the addresses of the computers in each group. When a packet of information reaches the router, the router checks the address on the packet and sends it to the part of the network containing that address. If you don’t enter a router address, you may not be able to access your whole network.

You can enter more than one router address (press the Return key after each address you enter).

4 If you have additional information, type it in the appropriate boxes.



These buttons and boxes appear only if you choose the Advanced or Administration user modes.

Name server address

A name server address is the IP address of a name server (or domain name server)—a computer that makes available the network address numbers for computers and other network devices that you know by name. For example, if you want to find a host computer called “server.xyz.com,” a name server could automatically match that name with an IP address (the computer-to-computer address).

You can type more than one name server address in the name server address box. Press Return after each address. You can list as many name servers as you want as long as your list doesn't total more than 255 letters and symbols.

Hosts file

The Select Hosts File button appears only when the TCP/IP control panel is set to Advanced or Administration user mode. For instructions on setting the user mode, see “Choosing Basic, Advanced, or Administration Settings,” later in this chapter.

A Hosts file is a list of DNS (Domain Naming System) resources. It is stored on your computer's hard disk. You use a Hosts file in order to easily access network information you use frequently. This is the same function provided by name servers. It is recommended that you use name servers rather than a Hosts file.

Implicit search domains

The implicit search domain boxes appear only when the TCP/IP control panel is set to Advanced or Administration user mode. For instructions on setting the user mode, see “Choosing Basic, Advanced, or Administration Settings,” later in this chapter.

TCP/IP can automatically search for computers you partially identify (in a networking application program) by “host name”—a name representing that computer on the network. To make the search possible, you specify a name representing a local network domain (the “starting name”) and a name representing a larger domain containing the local domain (the “ending name”). TCP/IP uses the domain names you enter to search for a valid host name when you identify only part of the name.

For more information about domain names and how the search process works, see “Name Servers, Domain Names, and Domain Searching” later in this chapter.

Additional search domains

TCP/IP can search for computers in any domains you specify. You specify the domains you want to search in the Additional Search Domains box. Press the Return key after each domain name you type. You can list as many search domains as you want as long as your list doesn't total more than 255 letters and symbols.

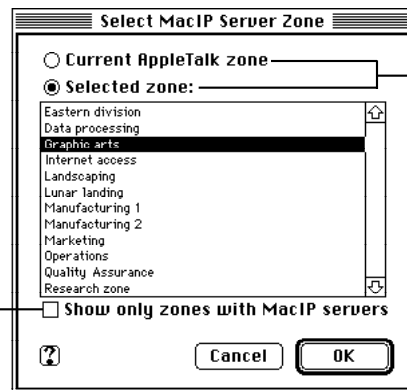
For more information about domain names and how the search process works, see “Name Servers, Domain Names, and Domain Searching” later in this chapter.

Configuring TCP/IP for use with a MacIP server

To configure TCP/IP for use with a MacIP server, follow these steps:

- 1 If necessary, click **Select Zone** to choose the zone of the MacIP server you want to use.
- 2 In the box that appears, choose the zone you want.

Click here to show only zones that have MacIP servers. It may take a few moments for this button to become available because TCP/IP searches for MacIP servers in all zones first.



Click Current Zone if your MacIP server is in the same zone as your computer. Click Selected Zone to choose a different zone.

- 3 Click **OK** to close the MacIP zone dialog box.

Your TCP/IP configuration information is obtained from the MacIP server when you attempt to open a networking connection (for example, by opening a networking application program).

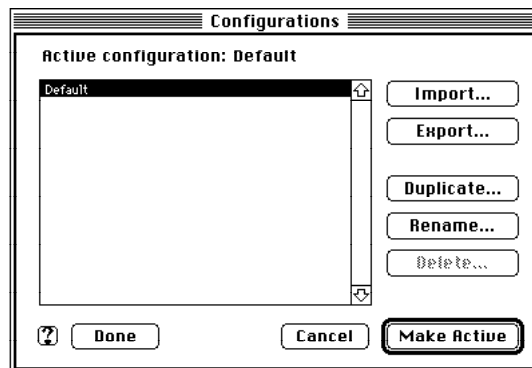
Working with TCP/IP configurations

A “TCP/IP configuration” is a way of referring to the collection of settings you make in the TCP/IP control panel. The settings currently displayed in the control panel are known as the active configuration.

You can save different groups of settings (configurations) and switch between them as desired. To work with multiple configurations, do this:

- **Make sure the TCP/IP control panel is open, and choose Configurations from the File menu.**

The Configurations window opens.



Choosing a configuration

If you see the configuration you want in the list, click it, then click Make Active.

Making a new configuration

You make a new configuration by starting with an existing one and modifying it. To create a new configuration, follow these steps:

- 1 In the configuration list, click to select the configuration you want to modify.
- 2 Click Duplicate.

- 3 In the window that appears, type a name for the new configuration, then click OK.**

The new configuration name appears in the list.

- 4 Click the new configuration name, then click Make Active.**

The Configurations window closes.

- 5 Make any changes you want to the control panel settings.**

- 6 Click the close box to close the control panel (or choose Quit from the File menu).**

A box appears asking if you want to save the changes you made to the configuration.

- 7 Click Save.**

The new configuration is saved with the changes you made. The next time you open the TCP/IP control panel, your new configuration will still be in effect.

Saving a configuration as a file

You can save (export) a configuration as a file separate from the TCP/IP control panel. You can use (import) the file to automatically duplicate the control panel settings on another computer using Open Transport. To save a configuration as a file, follow these steps:

- 1 In the Configurations window, click to select the configuration you want to save as a file.**

- 2 Click Export.**

- 3 In the box that appears, type a name for the configuration file, and choose the folder or disk where you want to save it.**

- 4 Click Save.**

Your configuration is saved as a file in the location you chose with the name you specified.

Opening and using a saved configuration

You can open and use (import) a configuration file that has been exported from the TCP/IP control panel. To open and use a configuration file, follow these steps:

- 1 In the **Configurations** window, click **Import**.
- 2 In the box that appears, click to select the configuration file you want to use.
- 3 Click **Import**.

The configuration is imported into the **Configurations** window.

- 4 Click **Make Active**.

The settings specified in the imported configuration take effect immediately.

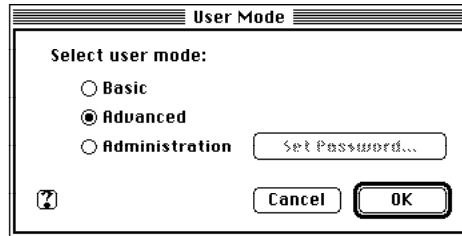
Choosing Basic, Advanced, or Administrative settings

When you first open the TCP/IP control panel, you see only the basic settings. Basic settings provide the controls you need in most cases. To see or change other settings, you must change the user mode from **Basic** to **Advanced** or **Administration**. You use **Administration** mode to lock settings so that other users cannot change them in **Basic** or **Advanced** mode. You can further protect locked settings by setting a password to limit access to **Administration** mode.

IMPORTANT The **Advanced** and **Administration** modes include settings that can cause network problems if used improperly. If you are not sure how to use **Advanced** or **Administration** mode, leave the settings unchanged until you check with your network administrator.

To choose a user mode, follow these steps:

- 1 With the TCP/IP control panel open, choose **User Mode** from the **Edit** menu.
- 2 In the dialog box that appears, choose the mode you want, then click **OK**.



If you choose **Administration** mode, and it has been protected by a password, a box appears in which you enter the **Administration** password.

The main control panel window changes to the mode you chose. For more information about using **Administration** mode, see the next section, “Using **Administration** Mode.”

Using **Administration** mode

If you choose **Administration** mode, you can lock and unlock settings, and set a password limiting access to **Administration** mode. To set a password, follow these steps:

- 1 With the TCP/IP control panel open, choose **User Mode** from the **Edit** menu.
- 2 In the window that appears, click the **Administration** button to select it.
- 3 Click **Set Password**.
- 4 In the box that appears, type the password you want to use.

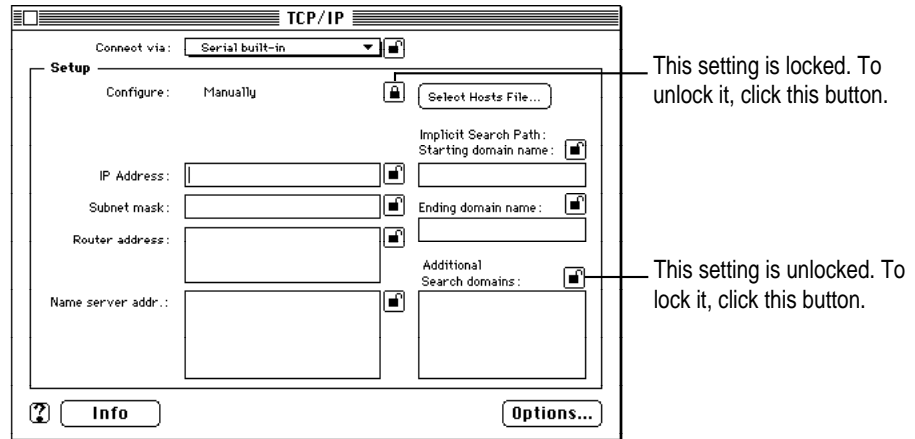
When you type the password, you see dots (•) instead of the letters you type.

- 5 Type the password again to make sure you typed it correctly, then click **OK**.

If you change the user mode to **Basic** or **Advanced**, you must use the password to change the mode back to **Administration**.

Locking settings

To lock settings, set the TCP/IP control panel to Administration mode, then click the lock icon next to each setting you want to lock. Click again to unlock a setting. When you change the user mode to Basic or Advanced, the settings you lock cannot be changed.



Getting information about your settings

For detailed information about the TCP/IP addresses and software versions currently in effect, do this:

- Choose **Get Info** from the File menu.

If the control panel is in Advanced or Administration mode, you can also click the Info button.

The TCP/IP Info window opens. You can see information in this window, but you cannot change it.

Turning TCP/IP on and off

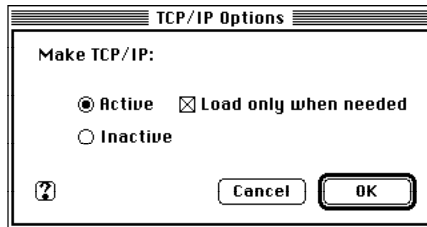
When you are not using a TCP/IP network, you can turn TCP/IP off to save RAM in your computer. When you need to use TCP/IP again, you can turn it on. You can also choose to have TCP/IP loaded into RAM all the time, or only when needed (the recommended setting). To turn TCP/IP on and off, follow these steps:

- 1 **Make sure the user mode is set to Advanced or Administration.**

For instructions on changing the user mode, see “Choosing Basic, Advanced, or Administrative Settings,” earlier in this chapter.

- 2 **Click Options.**

- 3 **In the dialog box that appears, choose the settings you want, then click OK.**



TCP/IP becomes active or inactive immediately.

About TCP/IP settings

This section describes the settings available in the TCP/IP control panel, and explains how TCP/IP uses the information you enter.

IP address

An IP (Internet Protocol) address is a set of four numbers from 0 to 255, separated by dots (for example, 111.123.222.213). It identifies your computer's connection to the network. You must have an IP address to use TCP/IP.

The numbers in an IP address are like a telephone number; the numbers on the left, like an area code, represent the “network number,” which is shared by all the computers on your network (or the part of your network your computer is connected to). The numbers on the right represent the “host number.” The portions of an IP address that represent the network number and the host number depend on how that network is designed.

The network numbers used in IP addresses are issued by an authorized agency to ensure that no duplicate addresses are used. An organization assigned a network number can use all of the available host numbers that can be associated with that network number.

Subnet mask

Some organizations need more IP addresses than are available with a single network number. More IP addresses can be used with a single network number by dividing a network into sections called subnetworks, or subnets. A subnet mask is a set of numbers used in conjunction with an IP address to identify a portion of the IP address as belonging to a particular subnetwork. Like an IP address, a subnet mask is a set of four numbers from 0 to 255, separated by dots (for example, 255.255.128.0).

If you don't enter a subnet mask, the TCP/IP control panel will provide a default subnet mask for you. However, the default subnet mask may not be the best one possible.

Router address

A router address is the IP address for a router—a device that directs information along the most efficient or appropriate network paths. It connects two networks that have different network numbers and it contains a list identifying the addresses of the computers in each network (and other routers providing connections to different network numbers). When a packet of information reaches the router, the router checks the address on the packet and sends it to the part of the network containing that address.

Routers have their own IP addresses. The IP address of the router being used by your computer is used by TCP/IP to send information to the correct network and host. When you use a BootP or DHCP server to configure TCP/IP, the router address is usually provided automatically. When you use MacIP, the router address is provided automatically and may change automatically, based on a number of factors taken into account by your computer's software.

If you have a dialup connection to the Internet using SLIP (Serial Line Internet Protocol) or PPP (Point-to-Point Protocol) software, you do not need to enter a router address in the TCP/IP control panel.

Name servers, domain names, and domain searching

The domain name system (DNS) is a standard for providing a name identifying any computer connected to the Internet, and for associating the name with the computer's IP address. The DNS also provides a way to identify some kinds of network services (such as electronic mail relays) available on particular computers. A computer's DNS name (or "host name") consists of a number of words or letters separated by dots (for example, "mailserver.west.xyzcorp.com.uk"). Reading right-to-left, it can indicate the geographic location of the computer ("uk," or United Kingdom), an organization type ("com," or commercial organization), the name of the organization ("xyzcorp"), and the specific computer (the mail server for the western region).

In the TCP/IP control panel, the following settings are used with the domain name system.

Name server address

A name server (or domain name server) is a computer that translates domain names into IP addresses. If you enter one or more name server addresses in TCP/IP, you can use host names rather than IP addresses in your networking software applications. For example, you could identify a host computer as "infoserver.xyzcorp.com" rather than remembering its IP address.

You can type more than one name server address in the name server address box. Press Return after each address. You can list as many name servers as you want as long as your list doesn't total more than 255 letters and symbols.

Hosts file

The Select Hosts File button appears only when the TCP/IP control panel is set to Advanced or Administration user mode. For instructions on setting the user mode, see “Choosing Basic, Advanced, or Administration Settings,” earlier in this chapter.

A Hosts file is a list of DNS (domain naming system) resources. It is stored on your computer’s hard disk, usually in the Preferences folder inside your active System Folder. You use a Hosts file in order to easily access network information you use frequently. This is the same function provided by name servers. It is recommended that you use name servers rather than a Hosts file. For information about the format for a Hosts file, see the Appendix.

Domain name searching

TCP/IP can automatically search for computers you partially identify (in a networking application program) by host name. The process of searching for a host name is called “resolving” the name. TCP/IP uses the starting and ending domain names you enter to attempt to resolve a host name within your domain. TCP/IP uses the domains you enter in the Additional Search Domains box to attempt to resolve a host name in different domains. You can list as many additional search domains as you want as long as your list doesn’t total more than 255 letters and symbols.

Implicit searching appends the starting and ending domain names you specify to a partial host name you enter.

The starting domain is often the name of your own local network domain. For example, if your computer is named “workstation.mktng.east.xyzcorp.com,” you might enter “mktng.east.xyzcorp.com” in the starting domain box.

The ending name is the name of the larger domain containing the starting name. It must match the end of the local domain. For example, if your starting domain is “mktng.east.xyzcorp.com,” you could enter “xyzcorp.com” in the ending domain name box.

The names you type in the two boxes define a range of domain names. When you use a partial host name, TCP/IP tries to resolve the name by appending each possible suffix in the range.

For example, if you have “mktng.east.xyzcorp.com” in the first box, “xyzcorp.com” in the second box, and search for “www,” TCP/IP tries to resolve these names:

www.mktng.east.xyzcorp.com

www.east.xyzcorp.com

www.xyzcorp.com

The names you type in the Additional Search Domains box are used as you type them, and are not used to search a range of domain names.

For example, if the box contains “apple.com,” “university.edu,” and “nowhere.org” and you search for “www,” TCP/IP tries to resolve these names:

www.apple.com

www.university.edu

www.nowhere.org

When trying to resolve a host name, TCP/IP submits each name to each server on your list (in the order they appear in the list). This process continues until a valid name is found, until all combinations have been tried, or until a name server reports that the host name does not exist.

An improperly administered name server may incorrectly report that a host name does not exist. Because such a report stops the search before the next name server in your list is queried, it is important to make sure that the name servers in your list are in the proper order. More reliable and complete name servers should be at the top of the list.

5

Troubleshooting



This chapter includes suggestions for what to try if you run into problems using the AppleTalk or TCP/IP control panels.

If you're having a problem and can't find an answer here or elsewhere in this manual (or in Macintosh Guide, available in the Guide [?] menu if you're using system software version 7.5.3 or later), see the service and support information that came with your computer for information about contacting Apple for additional help.

AppleTalk troubleshooting suggestions

I can't turn AppleTalk on.

Make sure you turn on AppleTalk in the AppleTalk control panel. If you're sure it's turned on in the control panel, check to make sure AppleTalk is also turned on in the Chooser. If you have other software that can turn AppleTalk on or off, make sure it's turned on in that software as well.

I can't see any network devices in the Chooser.

Make sure your networking cables are properly connected.

Make sure AppleTalk is turned on.

If AppleTalk is turned on, make sure you have chosen the correct port in the "Connect via" pop-up menu in the AppleTalk control panel.

If your network number or node number has been set to “User Defined,” turn off the User Defined setting, then close and reopen the AppleTalk control panel.

Make sure your network is functioning correctly (contact your network administrator).

I can't switch from a serial to an Ethernet connection.

If you use an expansion card to connect to Ethernet, make sure the card is installed correctly.

Make sure your Ethernet cables are connected properly.

Make sure your network is functioning correctly.

I can't remember my Administration password.

You can erase your Administration password (along with all of your AppleTalk settings and configurations) by dragging the AppleTalk Preferences file (inside the Preferences folder in your active System Folder) to the Trash. When you open the AppleTalk control panel again, you must reenter all your settings.

TCP/IP troubleshooting suggestions

I can't connect to devices outside my local network.

Make sure your router address is correct.

Make sure your subnet mask is correct.

I can connect to hosts by IP address, but not by name.

Make sure you have entered at least one name server address, and that the address is correct. If you have entered more than one, make sure the most reliable ones are listed first.

Make sure you have entered valid domain names in the Additional Search Domains box.

If you have entered starting and ending domain names for an implicit search, double-check to make sure they're correct. (The local and administrative domain names can be entered only when the TCP/IP control panel is set to Advanced or Administration user mode.)

My computer does not respond to a "ping."

Make sure you have an active application on your computer that uses TCP/IP and can respond to a "ping" from another computer.

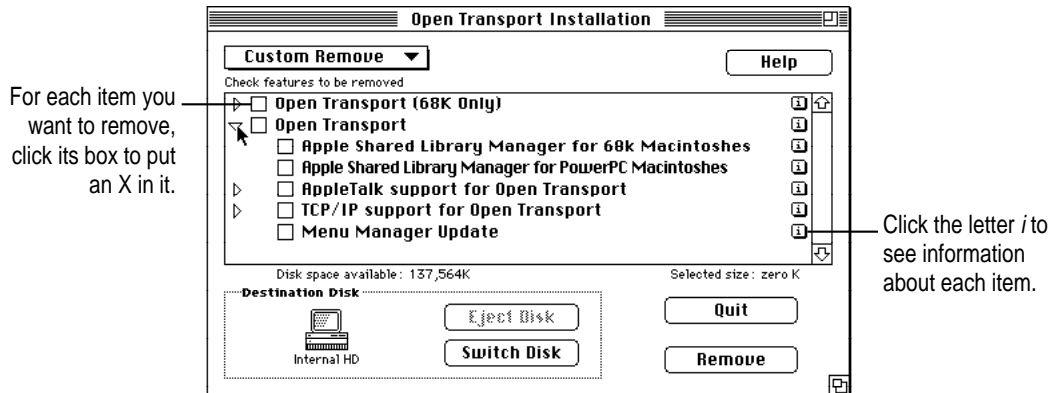
Make sure your TCP/IP configuration is correct.

Make sure your network cables are properly connected.

Make sure your network is functioning properly.

I can't remember my Administration password.

You can erase your Administration password (along with all of your TCP/IP settings) by dragging the TCP/IP Preferences file (inside the Preferences folder in your active System Folder) to the Trash. When you open the TCP/IP control panel again, you must reenter all your settings.





Appendix TCP/IP Hosts File Format

•••••

A Hosts file is a list of DNS (Domain Naming System) resources. It is stored on your computer's hard disk, usually in the Preferences folder inside your active System Folder, and can be used by the TCP/IP control panel. The information in a Hosts file consists of a series of records that must be in the following format:

```
domain name      data                ;comment (optional)
```

Domain names must contain at least one dot in order to be used in a Hosts file. For example: "apple.com" is an allowable name; "apple" is not.

The data in a Hosts file record include the following information, each separated by one or more space characters. Comments must be preceded by a semicolon.

Information	Notes
ttl (time to live):	the record's configured lifetime in seconds. This is optional. If it is not present, or if it is "-1", the entry is assumed to have an infinite lifetime.
class (optional):	the only class currently supported is IN (Internet domain)
type (required):	use "A" for host address, "CNAME" for canonical name of an alias, or "NS" for name server
IP address	

Examples of valid Hosts file records are:

```
apple.com A 130.43.2.2 ; address of host apple.com  
foobar CNAME barfoo.apple.com ; canonical name for the host whose local alias is "foobar"  
xyzcorp.com 86400 NS biglist.xyzcorp.com ; name server for xyz corp.—entry has a 1-week life
```

To use a MacTCP Hosts file with TCP/IP, make sure all of the listed domain names contain at least one dot. MacTCP allows the Hosts file to contain domain names that contain no dots. In TCP/IP, such a name will cause an error unless it is an alias.

To use a domain name with no dots in the TCP/IP Hosts file, you can use two records. The first record associates a local alias with a valid name, and the second resolves the domain name to an IP address. For example, you might have the following entry in a MacTCP Hosts file:

```
bigcomputer A 128.1.1.1
```

To accomplish the same effect of associating “bigcomputer” with the address 128.1.1.1, a TCP/IP Hosts file needs these two records:

```
bigcomputer CNAME largedomain.xyzcorp.com  
largedomain.xyzcorp.com A 128.1.1.1
```

The first record associates the alias “bigcomputer” with the valid domain name “largedomain.xyzcorp.com.” The second record resolves that domain name to the IP address 128.1.1.1.

If you can't find what you're looking for in this index, look in **Macintosh Guide**—available in the **Guide (?)** menu on your computer.



Index

• • • • •

A

- additional search domains
 - about 42
 - for Ethernet connections 29
 - for MacIP connections 32
- addresses
 - AppleTalk 20–21
 - IP (Internet Protocol) 24–25, 26, 29, 38–39
 - name server 27, 31, 41
 - router 27, 30, 40
- Administration mode settings (AppleTalk control panel) 17
 - locking and unlocking 19
 - password problems 44
 - setting password 19
- Administration mode settings (TCP/IP control panel)
 - locking and unlocking 36–37
 - password problems 45
 - setting password 36
- Administration password, forgotten 44–45
- Advanced mode settings
 - AppleTalk control panel 16–17
 - TCP/IP control panel 35–36

- AppleTalk control panel
 - choosing user modes 16–19
 - getting information about settings 20–21
 - onscreen help 12
 - opening 13
 - problems using 43
 - setting up 11
 - specifying port and zone 13
 - turning AppleTalk on or off 17, 22
 - uses 11
 - using configurations to change settings 14–16
- AppleTalk Info window 20
- AppleTalk settings
 - hardware address 21
 - router address 21
 - This Macintosh address 20

B

- Balloon Help
 - for AppleTalk control panel 12
 - for TCP/IP control panel 24
- Basic mode settings
 - AppleTalk control panel 16–17
 - TCP/IP control panel 35–36
- BootP (Boot Protocol) server 24–25

C

- communications software 1–2
- computers
 - identifying names 40
 - IP address 24–25, 38–39
 - multihomed 39
 - problems responding to “ping” 45
 - restarting 8, 10
 - searching for names 41
- configurations (AppleTalk control panel)
 - choosing 14
 - creating 15
 - default 14
 - opening and using 16
 - options 16
 - saving as a file 15–16
- configurations (TCP/IP control panel)
 - choosing 33
 - creating 33–34
 - for Ethernet connection 26–29
 - for use with Ethernet server 29
 - for MacIP connection 29–32
 - for use with MacIP server 32
 - opening and using 35
 - options 33
 - saving as a file 34
- Configurations window
 - opening
 - AppleTalk control panel 14
 - TCP/IP control panel 33
 - “Connect via” pop-up menu
 - AppleTalk control panel 13
 - TCP/IP control panel 26
- control panels. *See* individual names
- Custom Install 8–10

D

- default configuration 14
- deleting configurations
 - AppleTalk control panel 14
 - TCP/IP control panel 33

- DHCP (Dynamic Host Configuration Protocol) 24–25
- domain name system (DNS)
 - about 40
 - uses 24
- domain searching, about 41–42
- duplicating configurations
 - AppleTalk control panel 14–15
 - TCP/IP control panel 33

E, F, G

- Easy Install 6–8
- e-mail addresses. *See* Hosts file, name servers
- Ethernet
 - cabling 11
 - connection for use with server 29
 - connection problems 44
 - manual connection 26–29
- exporting configurations
 - AppleTalk control panel 14–15
 - TCP/IP control panel 33

H

- hardware address 21
- hardware requirements for Open Transport 5
- help 3
 - for AppleTalk control panel 12
 - Read Me file 3
 - for TCP/IP control panel 24
- host name 40
- Hosts file
 - about 41
 - for Ethernet connection 28
 - for MacIP connection 31
- Hosts file format 47–48


I, J, K

- implicit search domains
 - about 41
 - for Ethernet connection 28
 - for MacIP connection 31
- importing configurations
 - AppleTalk control panel 14–15
 - TCP/IP control panel 33
- information
 - about AppleTalk settings 20–21
 - about TCP/IP settings 37
 - sources 3
- installing Open Transport software
 - Basic Install 5–8
 - Custom Install 6–10
- Internet
 - connections 23
 - identifying computers and associating names 40
- Internet Activities Board (IAB), issuing network numbers 39
- Internet names and addresses. *See* Hosts file, name servers
- Internet Protocol. *See* IP
- IP (Internet Protocol) address
 - about 38–39
 - entering 24–25
 - for Ethernet connection 26
 - for MacIP connection 29
 - provided by Ethernet server 29

L

- LocalTalk 11
- locking settings
 - AppleTalk control panel 13, 17, 19
 - TCP/IP control panel 35, 37

M

- Macintosh Guide (Guide  menu) 3
 - for AppleTalk control panel 12
 - for TCP/IP control panel 24
- MacIP (Macintosh Internet Protocol)
 - manual connection 29–32
 - server 24–25
 - server connection 32
- MacTCP control panel 1
- modem port, connecting to AppleTalk network 13
- modes, user
 - AppleTalk control panel 16–18
 - TCP/IP control panel 35–37
- multihomed computers 39

N

- names, computer 40
- name servers (domain name server)
 - about 40
 - for Ethernet connection 27
 - for MacIP connection 31
- network addresses. *See* Hosts file, name servers
- network (AppleTalk). *See also* AppleTalk control panel
 - changing address 17
 - connecting to 12–13
 - devices not in Chooser 43
 - problem settings in user modes 16, 35
- Network control panel 1
- network devices, problems connecting to 44
- network numbers
 - AppleTalk 20
 - TCP/IP 39
- network software, version
 - information 20, 37

- network (TCP/IP). *See also* TCP/IP control panel
 - configuring for Ethernet connection 26–29
 - configuring for use with Ethernet server 29
 - configuring for MacIP 29–32
 - configuring for use with MacIP server 32–33
 - connecting to 24–26
 - IP (Internet Protocol) address 24–25
 - locating services 24
- node number 20

O

- online help 3
 - for AppleTalk control panel 12
 - for TCP/IP 24
- Open Transport
 - about 1–2
 - bundled with Mac OS computer 5
 - installing software 5–10
 - system requirements 5
- Open Transport installation window
 - Custom Install 9
 - Easy Install 7
- Open Transport Read Me file 3

P, Q

- passwords
 - AppleTalk control panel 18, 19
 - TCP/IP control panel 36, 45
- ports
 - for AppleTalk network connection 12–13
 - specifying
 - AppleTalk control panel 17
 - TCP/IP control panel 24, 26
- PPP (Point-to-Point Protocol) 40

- printer port, connecting to AppleTalk network 13
- protocols
 - AppleTalk 11
 - TCP/IP 23

R

- RARP (Reverse Address Resolution Protocol) server 25
 - for Ethernet connection 29
- Read Me file 3
- renaming configurations
 - AppleTalk control panel 14
 - TCP/IP control panel 33
- router addresses
 - AppleTalk 21
 - TCP/IP 27, 30, 39–40, 44

S

- servers, using with TCP/IP control panel 24–26
- setting up AppleTalk control panel
 - AppleTalk configurations 14–16
 - AppleTalk network connection 12–13
 - choosing user modes 16–19
 - getting information about settings 20–21
 - turning AppleTalk on and off 22
- setting up TCP/IP control panel
 - choosing user modes 35–37
 - getting information about settings 37
 - network connections 25–26
 - turning TCP/IP on and off 38
- SLIP (Serial Line Internet Protocol) 40
- subnet mask number 24–25
 - about 39
 - for Ethernet connection 26
 - for MacIP connection 30
- subnetworks 26, 39
- system requirements for Open Transport 5

T

- TCP/IP control panel
 - about available settings 38–42
 - about IP address settings 38–39
 - about router address settings 39–40
 - about subnet mask settings 39
 - choosing user modes 35–36
 - configuring for use with Ethernet server 29
 - configuring for use with MacIP server 32
 - configuring manually for Ethernet connection 26–29
 - configuring manually for MacIP connection 29–32
 - getting help 24
 - getting information about settings 37
 - opening 25
 - problems using 44
 - searching for computers and names on network 40–42
 - setting up network connection 24–26
 - turning TCP/IP on and off 38
 - working with configurations 33–35
- TCP/IP Hosts file format 47–48
- TCP/IP settings
 - domain names 40
 - domain name searching 40–42
 - Hosts file 41
 - IP (Internet Protocol) address 38–39
 - name servers 40
 - router address 39–40
 - subnet mask 39
- This Macintosh address 20
- troubleshooting
 - AppleTalk 43
 - TCP/IP 44
- turning on and off
 - AppleTalk 22, 43
 - TCP/IP 38

U, V

- unlocking settings
 - AppleTalk control panel 13, 17, 19
 - TCP/IP control panel 35
- user modes
 - AppleTalk control panel 16–18
 - TCP/IP control panel 35–36

W, X, Y, Z

- zones
 - for AppleTalk network connection 12–13, 17
 - for MacIP connection 32



Apple Computer, Inc.

1 Infinite Loop

Cupertino, California 95014-2084

408.996.1010

U95600-024A

Printed in U.S.A.